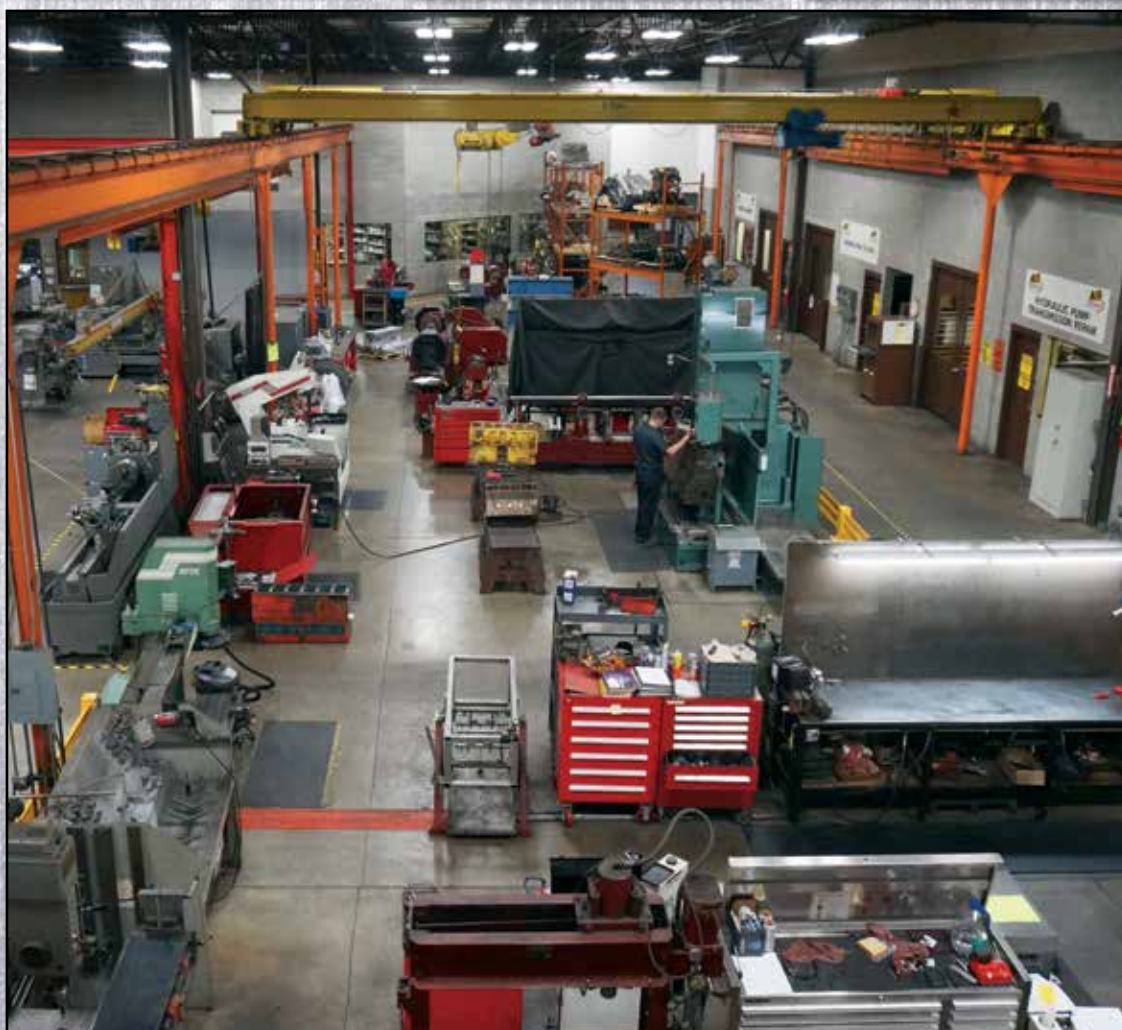




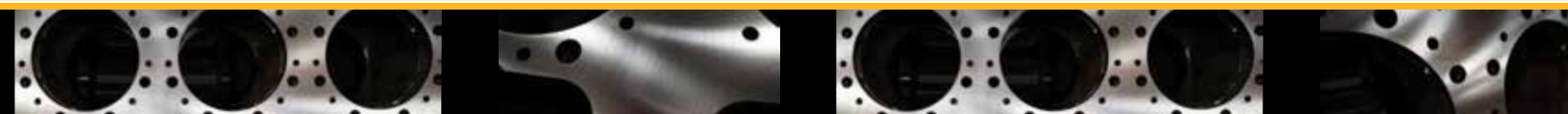
**AIS Engines is dedicated to quality engine,
transmission, and hydraulic repair
and remanufacture for ALL BRANDS.**

Discover the AIS Difference.



- **Engine Rebuilding And Remanufacturing**
- **Fuel Shop**
- **Complete Engine Machine Shop**
- **Complete Hydraulic Pump, Motor, And Transmission Shop**
- **Complete Hydraulic Cylinder Shop**

616-531-0228



HYDRAULIC CYLINDERS

HYDRAULIC CYLINDER CAPABILITIES:

- Reseal leaking cylinders
- Rebuild damaged or worn cylinders
- Complete Remanufacture
- Hone or bore worn out cylinders
- Create custom hydraulic cylinders for any application
- Cylinder Modifications
- Built and Torqued to Manufacturer's specifications



WELDING:

- Miller Mig, Tig and Arc
- Aluminum and Steel

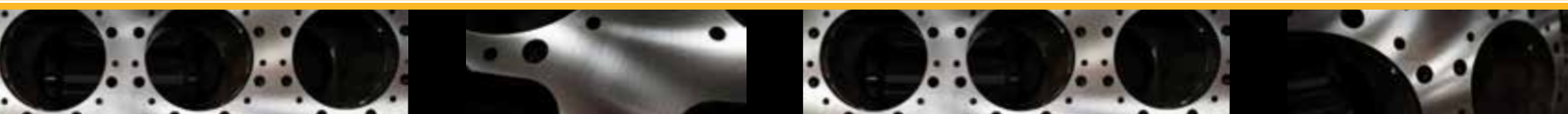
SPECIALTY MACHINES:

- Sunnen Hone HL-120
from 2 1/2" - 11 1/2" dia
10' Long
- Tuxco Torq Bench
Up to 60,000 ft lbs
Up to 17' long
- Tuxco Test Stand
Up to 4000 psi



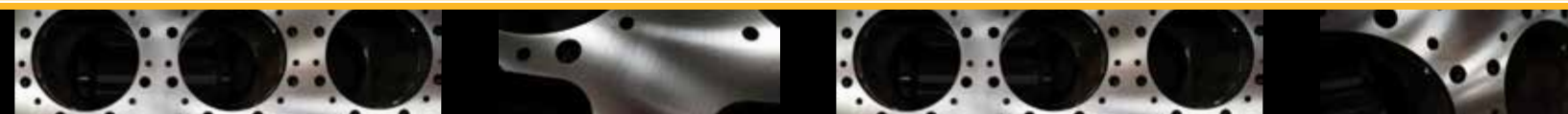
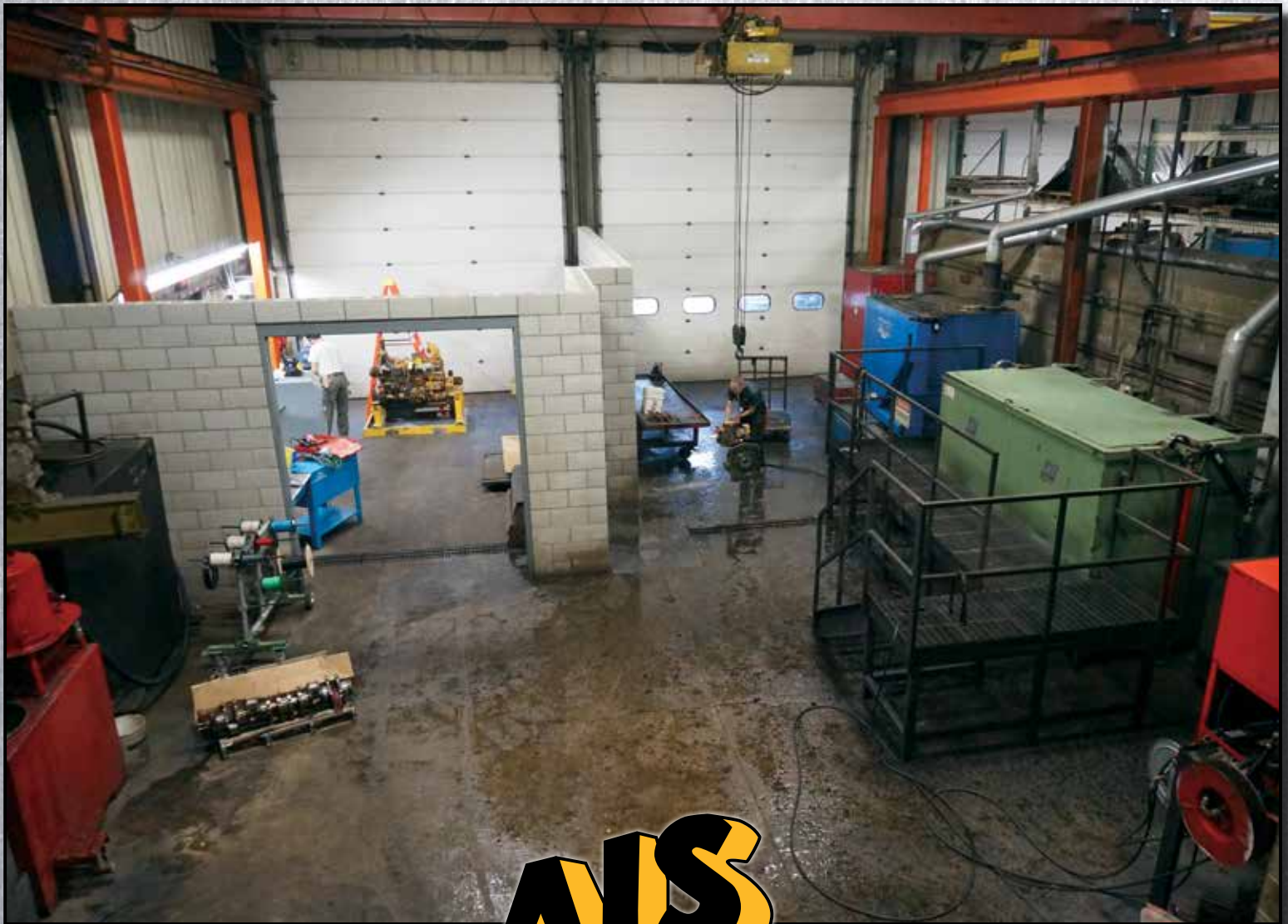
STOCK INVENTORY:

| | |
|-----------------|--------------------|
| Metric Rod | 25mm-140mm |
| Standard Rod | 3/4"-4 1/2" |
| Metric Barrel | 75mm ID - 200mm ID |
| Standard Barrel | 2" ID - 9" ID |



TEAR DOWN & INSPECT

- Complete Engine Tear Down & Inspection •
- Acid Dip Hot Tank capable of Industrial size CAT 3516 Engine •
 - Shot-Peen Cleaning •
 - Glass Bead Cabinet •
- Dip tank and jet wash for final clean 112" long x 48 wide x 60" deep •



MACHINE SHOP

CRANKSHAFTS AND CAMSHAFTS

MACHINE LIST:

AMC K2700-U Grinder

Rex 1500 Grinder

- Magnetic particle inspection for cracks
- Inspect for hardness and straightness
- Polish and grind crankshafts
- Indexing and stroke equalization
- Plugs removed and oil galleys cleaned



CYLINDER HEADS

MACHINE LIST:

SFOE Rottler Surfacers

SG80M Seat and Guide Machine

VR7 Valve Grinder

Sirdi Seat and Guide Machine

TMA-40 Peterson for machining injector tubes

- Resurfacing
- Injector tube replacement (including Cummins ISX)
- Magnetic particle inspection
- Pressure tests for cracks/leaks
- Valve seat and guide replacement
- Re-machine fire ring grooves
- Resurface exhaust ports
- Valve seat angles cut with 3 angle inserts in same set up
- Capable of machining heads from 2 cyl. Kubota all the way through Cat 3600 Ser.
- Remove and install cam bearings on overhead cam engines
- State of the art SG80M Head machine to achieve highest quality
- Cracked castings are discarded and replaced with noncracked castings for highest quality



CYLINDER BLOCK REPAIR

MACHINE LIST:

**F88E Block Machine
HP7A Cylinder Block Hone
L2500 AMC Line Bore Machine
Sunnen Line Hone**

- **Complete and thorough inspection including magnetic particle inspection and pressure testing**
- **All critical dimensions measured, recorded and compared to OEM specifications**
- **Deck resurfacing performed with inserts to meet OEM surface finish**
- **Resurfacing capabilities up to 94" in length**
- **Cylinder blocks resurfaced and bored to OEM specifications**
- **Final align bore**

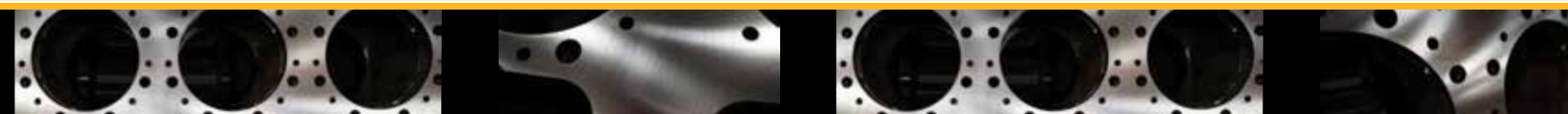


CONNECTING RODS

MACHINE LIST:

**RMC Rod Bore Machine
Sunnen Rod Hone
Delta Cap Cutter**

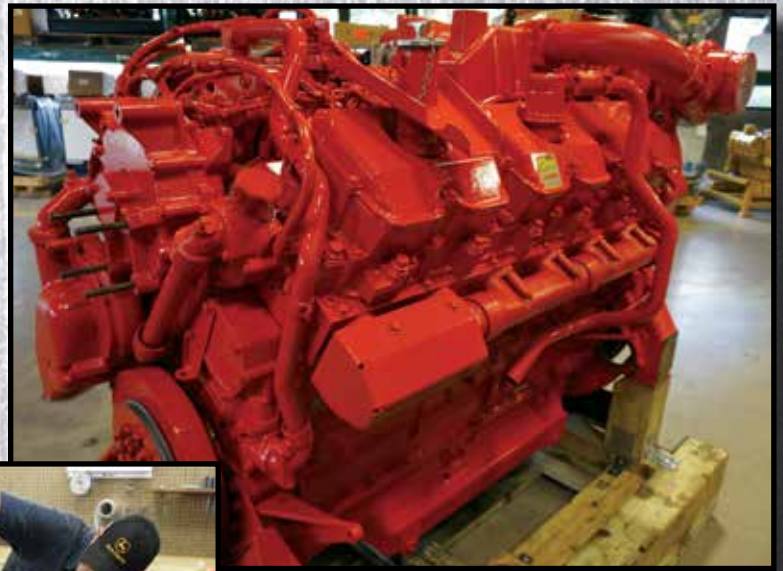
- **Complete recondition**
- **Replace pin bushings**
- **Magnetic particle inspection**
- **Recondition I.D. housing bore**
- **Check center to center, bend and twist**
- **All rods demagnetized**



ASSEMBLY

SPECIALTY TOOLS FOR:

**Komatsu
Cat
Cummin's
John Deere
Perkins
Deutz
Scania
Liebherr**



DYNO LOAD TEST

POWER TEST

**2000hp
6000 lb. ft. torq.
4000 RPM max**



HYDRAULIC SHOP



MACHINE LIST:

Aidco 850 Test Stand

125 hp

Open close loop

**Pumps, motors,
transmission**

Lapmaster 48

Lapmaster 20

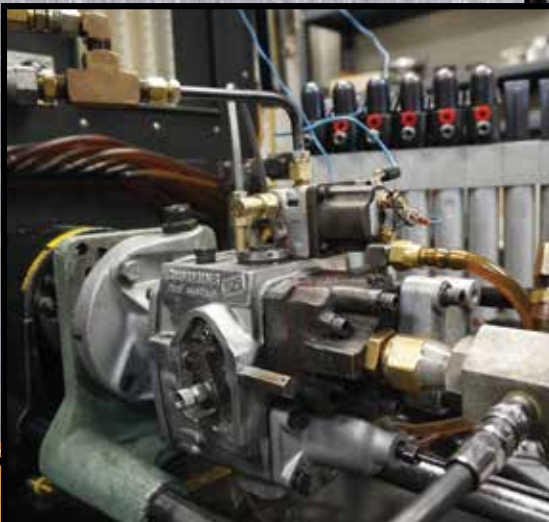


INJECTION SHOP

FUEL ROOM MACHINE LIST:

Bacharach Specialist 8010

Bacharach Flow Console





Discover the AIS Difference.

4781 Clay Ave S.W., Grand Rapids, MI 49548

616-531-0228

Fax: 1-616-531-4788

www.aisengine.com

Service Department Hours

Mon-Fri: 7AM - 5PM • Sat-Sun: Closed

